

# Samurai<sup>®</sup>

## Sorting Robot

- Reduced labor costs & HR challenges
- Up to 70 picks/min<sup>1</sup>, double the average pick rate of a human sorter
- Up to 95% efficiency of targeted product recognition<sup>1</sup>
- Increased sorting availability, productivity, performance & safety



Fits on New or Existing Conveyors

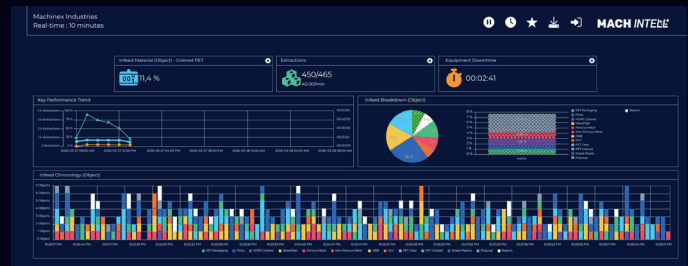
Samurai<sup>®</sup> is Machinex's sorting robot, powered by MIND™, Machinex-Engineered AI, designed to accurately identify materials for positive product recovery or precise quality control. Featuring a unique 4-articulation robotic arm, Samurai<sup>®</sup> reduces reliance on manual sorting within your recovery facility.

	Width	Length	Height	Working Envelope	Conveyor Width
Samurai <sup>®</sup> 650	7'0" (2.1m)	7'10" (2.9m)	7'11" (2.4m)	51" (1.3m)	24" - 36" (0.6 - 1.0 m)
Samurai <sup>®</sup> 800	8'0" (2.4m)	10'0" (3.0m)	8'6" (2.6m)	63" (1.6m)	24" - 48" (0.6 - 1.2 m)

## MACH INTELL™

Machinex's business intelligence platform extracts data from camera vision units. Its intuitive dashboard translates real-time data into clear visibility of material streams and provides key performance indicators MRF operators need to optimize performance such as:

- Flow Composition
- Material Trends Per Given Period
- Quantity Per Material Type
- Extractions



<sup>1</sup> The performances could vary depending upon the variations of tonnage & material composition, quantity, material spread, etc.



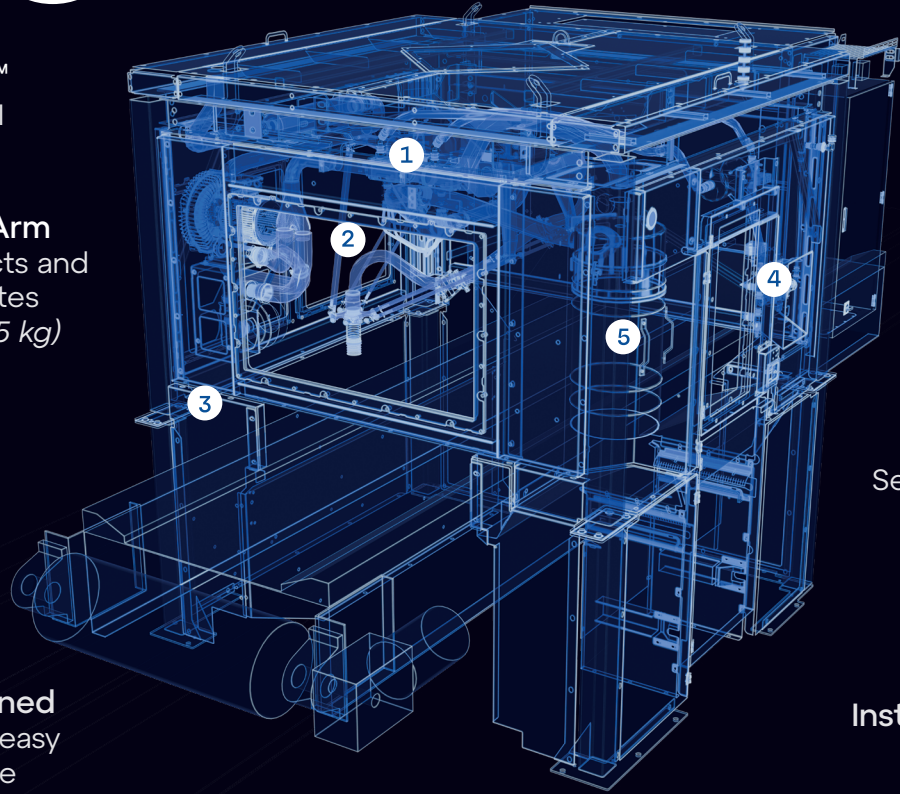
**5. Material Handling Flexibility**  
Recovered product handled through fixed or portable sorting chutes

**1. Powered by MIND™**  
Machinex-Engineered AI

**2. 4-Axis Articulated Arm**  
Targets designated products and sort them into the chutes  
(Max. payload 2.75 lb - 1.5 kg)

**3. Plastic Film Handling System**

**4. Ergonomically Designed**  
Maximize productivity by easy access for preventative maintenance



**Enclosed Self-Supporting Cell**

**Installation Time**  
2-3 days

### Adaptable System Configurations

Designed to scale with your operational needs, the system is available in both single-cell and double-robot configurations, with extended conveyor width options for increased capacity and flexibility.



Double Robot

## MIND™

### Artificial Intelligence for Sorting Operations

Combines computer vision, machine learning & real-time decision-making

### Data Accessible Through MACH Intell™

Detects & classifies materials, turns insights into operational decisions & enhances extractions

### Purpose-Built for the Waste & Recycling Industry

Has been developed, deployed & proven in real operating facilities since 2019

**ENGINEERED BY MACHINEX**